

# GRAND CAYMAN

YOUR ADVENTURE IN PORT AWAITS



## PORT FACTS

**About Your Destination:**  
The Tax & Duty-Free Shopping in Grand Cayman is along Harbour Dr.

**Capital:**  
George Town

**Population:**  
69, 427

**Language:**  
English

**Currency:**  
U.S. dollar, Cayman Islands dollar (CDI) and credit cards are accepted everywhere.

## TRAVEL FACTS

**Shopping Ambassador:**  
See your Shopping Ambassador for Shopping Tips and Port Maps. Don't forget to download and save this map for your **FREE** in-port gift coupons (below).

**Credit Cards:**  
Major credit cards are accepted in all the guaranteed and recommended stores ashore.

**Taxi:**  
Affordable and easy to find near the port.

**Tender Ride:**  
Traveling to George Town requires a short 10-minute Tender Ride.

**FREE GIFT**  
COLLECT YOUR FREE STINGRAY CHARM FROM STORE #1 ON THE MAP!



## DISCOVER SHOPPING IN THE ISLANDS

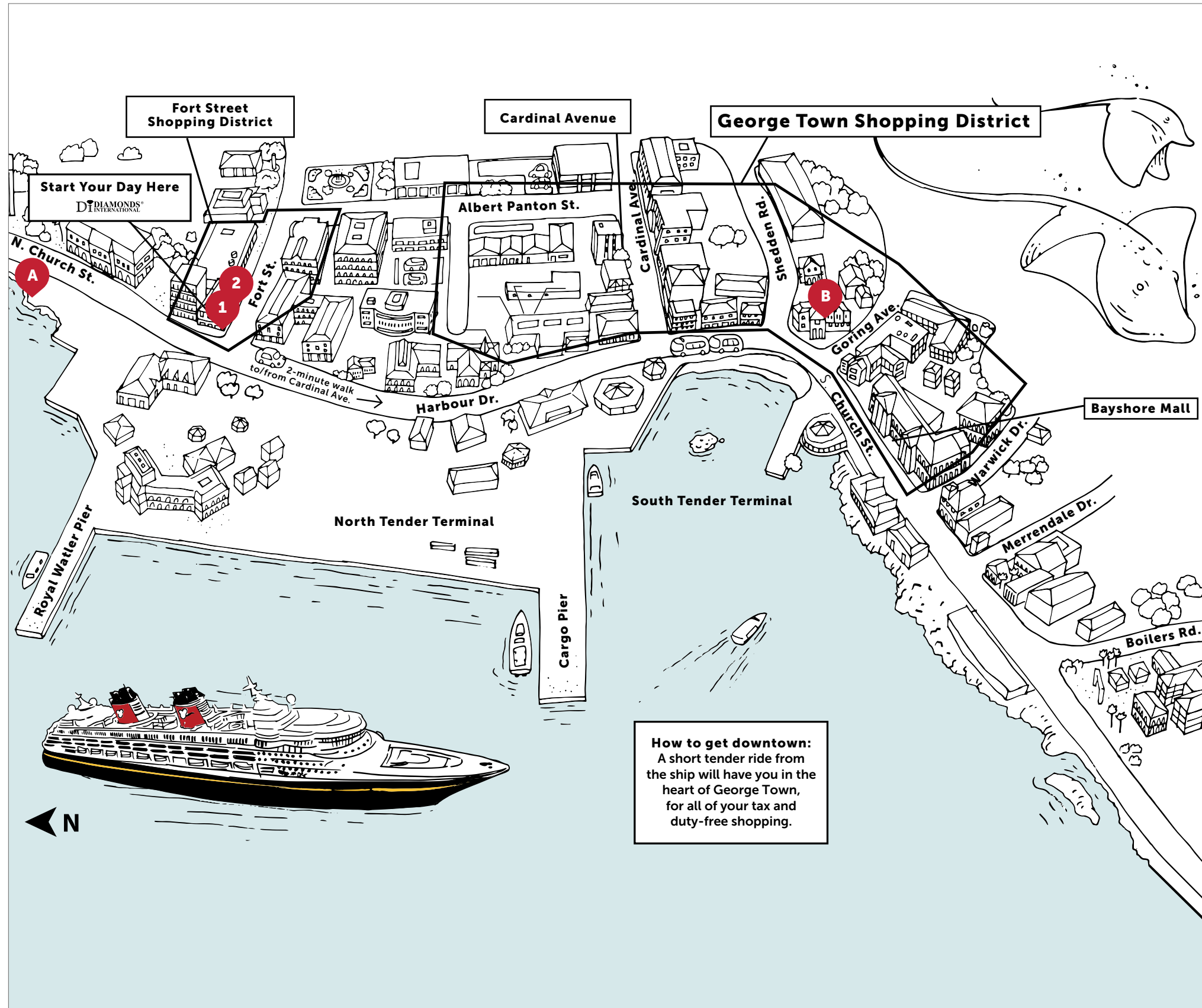


## GUARANTEED & RECOMMENDED STORES

### CONTACT YOUR SHOPPING AMBASSADOR ONBOARD:

DISNEY DREAM: #28081 DISNEY MAGIC: #28091 DISNEY FANTASY: #28080  
DISNEY WONDER: #36311 DISNEY WISH: #20808

ALL GUARANTEED & RECOMMENDED STORES ON THIS MAP WILL ACCEPT U.S. DOLLARS.



**DIAMONDS INTERNATIONAL® 1**  
A Must-See for Diamonds, Exotic Gemstones, Watches & Jewelry. Family Owned, Exceptional Selection, and Outstanding Customer Service.

- Exclusive retailer of Crown of Light® diamonds and Safi Kilima® Tanzanite.
- Customize your jewelry, with same-day delivery.
- Time for an upgrade? Lifetime upgrade policy.
- Take the Crown of Light Challenge: Compare any diamond to the sparkle of Crown of Light.
- Discover high-quality Safi Kilima Tanzanite.
- De Beers Forevermark® diamonds authorized jeweler.
- Collect your complimentary charm bracelet and Caribbean charm today!

**DIAMONDS INTERNATIONAL® 2**  
**WATCH & DESIGN**  
Discover Some of the World's Most Sought After Timepieces, Designer Jewelry & Luxury Brands.

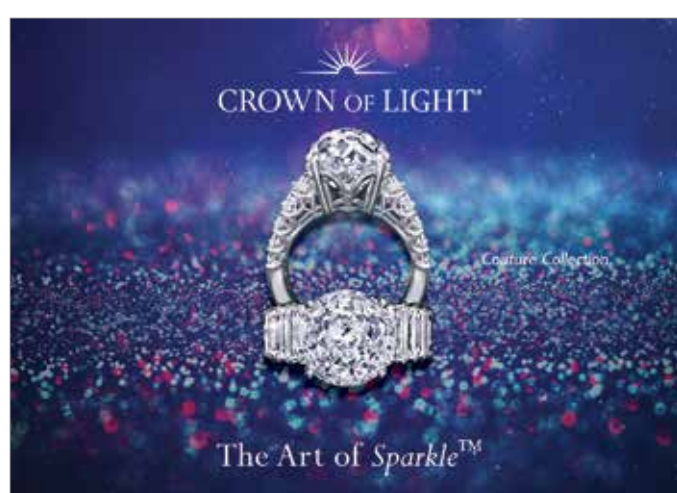
- Luxury brands: Bremont®, Bulova®, Hamilton®, Philip Stein®, Pre-Owned Rolex®, & more!
- Designer Jewelry: Forevermark®, Marahago® Larimar, Kabana® & more.
- Ask to see the Crown of Light Hublot watch.

**PHOTO OPPORTUNITIES:**

- A This Way to 7 Mile Beach
- B Grand Cayman National Museum

This guide is specially prepared by Real Focus Media and our Shopping Ambassador Program and is intended to assist you during your visit to this port. Please note that the information and prices provided in this map are subject to change without notice. We apologize for any inconvenience, but Disney Cruise Line cannot accept responsibility for any deviations. Thank you.

## GUARANTEED MERCHANTS, EVENTS, FREE GIFTS & SPECIAL OFFERS



**EVENTS IN PORT**  
Don't miss the fun of in-store raffles, discounts & gifts with purchase. Inquire in-store at:  
**DIAMONDS INTERNATIONAL® 1**

**TANZANITE DEALS**  
Ask about the Safi Kilima Tanzanite 4-piece-set, for only **\$399!**  
*Retail value \$976. While stocks last.*  
**DIAMONDS INTERNATIONAL® 1**

**EXCLUSIVE OFFERS**  
Experience the Crown of Light® Couture Collection.  
**\$250** towards your purchase.  
**DIAMONDS INTERNATIONAL® 1**

**SHOP MORE, SAVE MORE**  
**\$100 OFF** (Purchase of \$1,000 or more.)  
**\$250 OFF** (Purchase of \$2,500 or more.)  
*Exclusions may apply.*  
**DIAMONDS INTERNATIONAL® 1**

**FREE Diamonds International® Collectible Charm Bracelet & Grand Cayman Stingray Charm**  
*No purchase necessary. Offer in effect while supplies last. Limit one offer per person.*

**Receive a \*FREE Omega necklace and Tanzanite pendant with every Safi Kilima® Tanzanite purchase.**  
*Limit one per person. Offer in effect while supplies last.*

**Look in the Diamond Light Performance Scope and receive \$50 towards your Crown of Light® purchase.**  
*Some exclusions may apply.*

**FREE Diamond Heart Necklace with any diamond purchase at Diamonds International®.**  
*Limit one per person. Offer in effect while supplies last.*

## BRAND FINDER

## LUXURY BRANDS

**FEATURED BRANDS**

**LUXURY JEWELRY:**  
CROWN OF LIGHT® 1  
DI® DIAMONDS 1  
FOREVERMARK® 1, 2  
SAFI KILIMA® TANZANITE 1

**LUXURY TIMEPIECES:**  
BREMONT® 2  
BULOVA® 2  
HAMILTON® 2  
PHILIP STEIN® 2  
PRE-OWNED ROLEX® 2



**THE PORT AND SHOPPING SHOW**  
TUNE IN FOR MORE INFORMATION ABOUT YOUR DESTINATION, WATCH:  
**CHANNEL 9**

**UPON ARRIVAL TO PORT**  
See your Shopping Ambassador on the Gangway before you leave the ship for your **FREE VIP CARDS** to help you save time and receive free gifts in port! Remember, the stores listed on this map carry a **60-Day Buyer's Guarantee.**

**FREE**  
**DIAMONDS INTERNATIONAL CHARM BRACELET**  
PRESENT THIS COUPON AT ANY DIAMONDS INTERNATIONAL STORE AND RECEIVE YOUR **FREE CHARM BRACELET**

**FREE**  
**JEWELRY CLEANING**  
Present this map at **Diamonds International®, Store #1** on the map for complimentary jewelry cleaning.  
Redeemable at **DIAMONDS INTERNATIONAL**

## BUYER'S FREE 60-DAY GUARANTEE + TERMS & CONDITIONS

**BUYER'S FREE 60-DAY GUARANTEE**  
Shop with confidence. The merchants on this map have agreed to provide a 60-day guarantee to buyers. Under the Buyer's Guarantee, merchants will repair or replace unsatisfactory or defective merchandise. This guarantee excludes situations of theft, loss, buyer's negligence, or buyer's remorse; the same exclusion applies to custom orders and watches. Certain watches and other branded merchandise may require repair or replacement by the brand's service center, not the merchant listed on this map.

For purposes of assessing the quality of jewelry, only appraisals from gem laboratories or appraisals from independent and accredited graduate gemologists not affiliated with jewelry retailing are accepted. Watches and other branded merchandise valuation comparisons must be based on full-price retail prices offered by authorized brand retailers.

All returns must be authorized by the merchant. Many stores in port offer their own guarantees and return policies; please ask about individual store return policies prior to purchasing and see sales associates for additional information.

**NEED TO MAKE A CLAIM?**  
If you become aware of a problem during your cruise, please contact the Shopping Ambassador on your ship for immediate assistance. If a problem arises after your cruise but within 60 days of the purchase date, you may initiate your claim by contacting the customer relations department at Real Focus Media. For Customer Service, please contact 2201 SW 145th Ave., Ste. 201, Miramar, FL 33027. Toll Free: (866) 736-2375 E-mail: CS@realfocusmedia.net Hours: (EST) Monday – Thursday, 9:00 a.m. to 6:00 p.m. Friday 9:00 a.m. to 4:00 p.m.

**PROGRAM COORDINATOR**  
The Port Shopping Program is offered and operated solely by Real Focus Media, which stands behind all customer relations claims relating to the guarantee. Participating merchants have paid an advertising fee to Real Focus Media for inclusion in this program. Real Focus Media is not owned by and is not an affiliate or subsidiary of Magical Cruise Company, Ltd.